

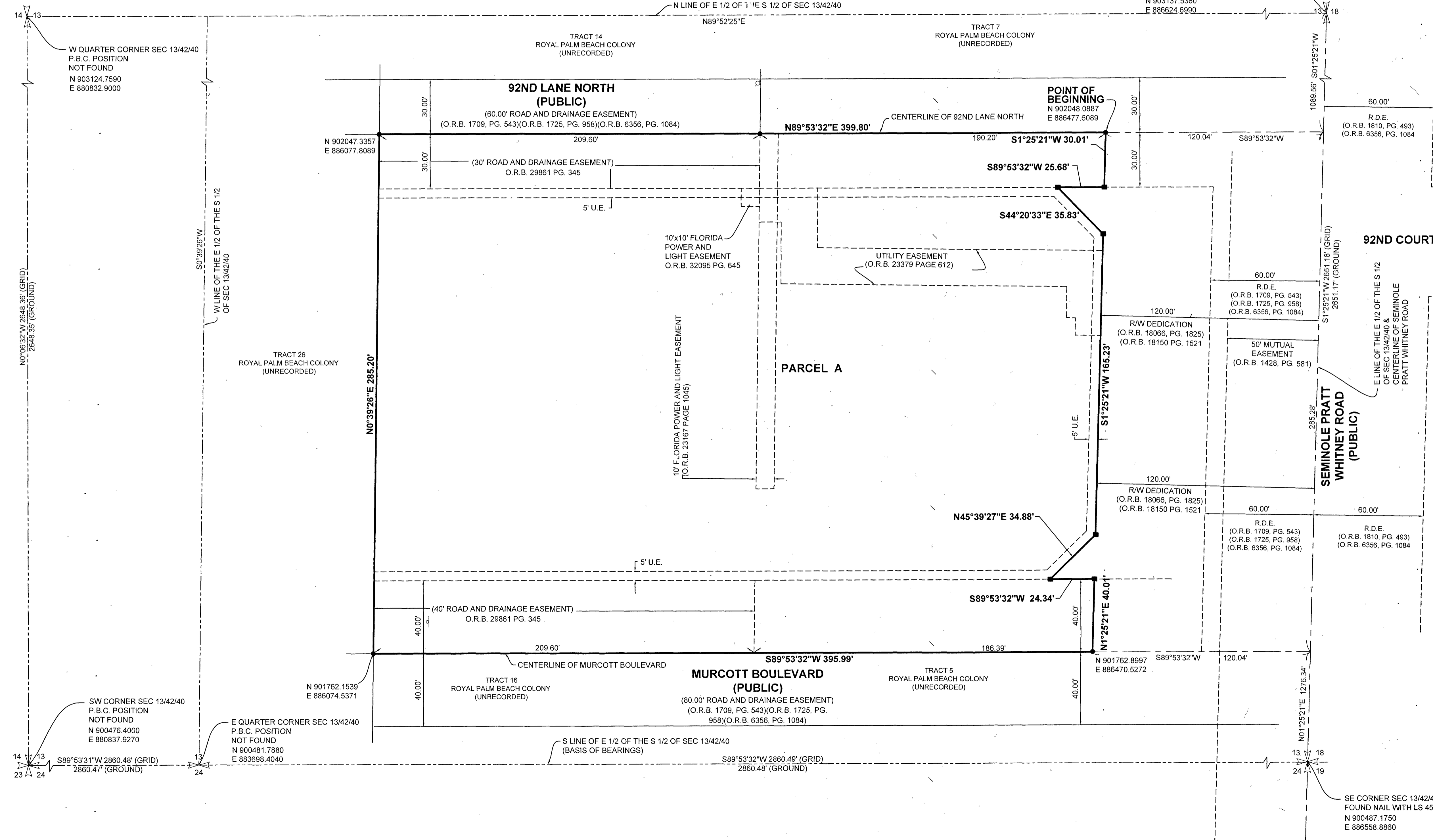
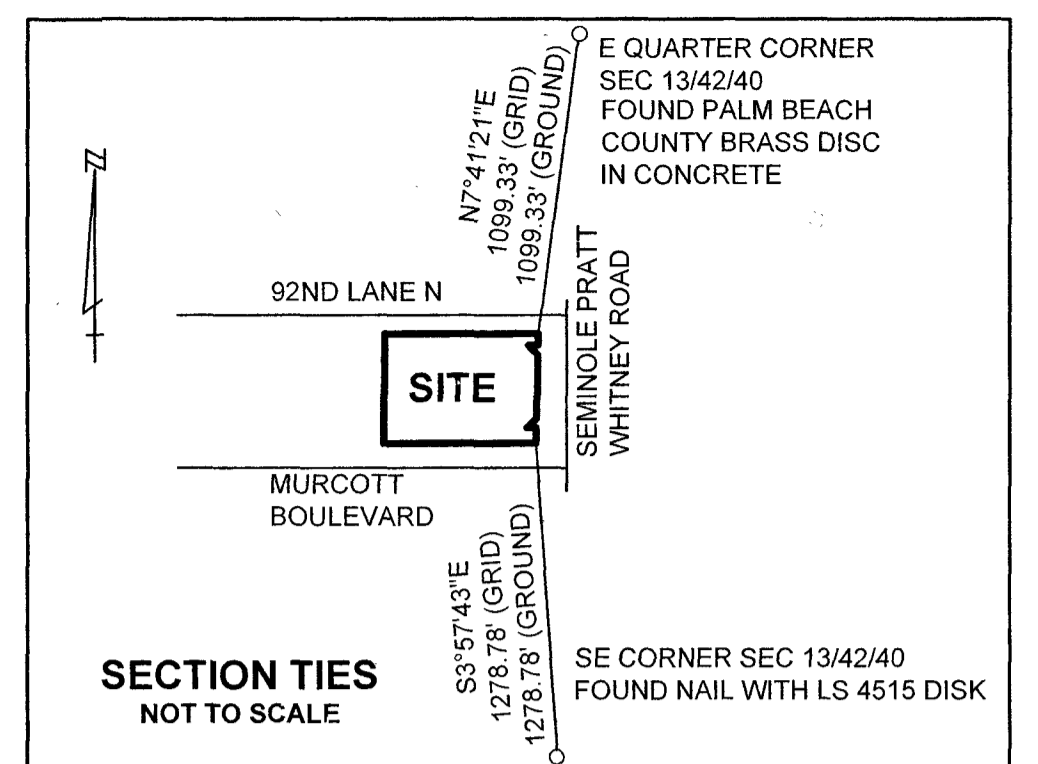
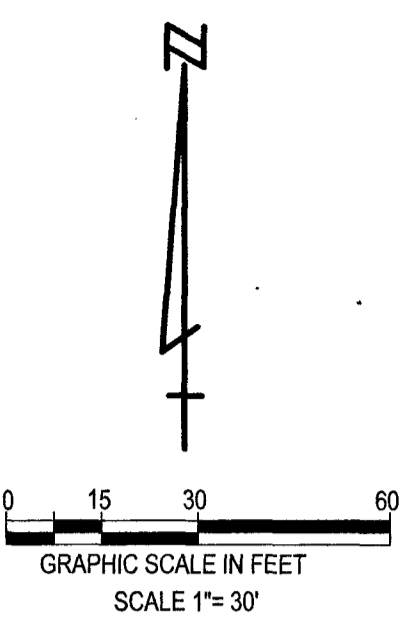
123

PLANET KIDS IX

BEING A PORTION OF SOUTHEAST QUARTER OF SECTION 13, TOWNSHIP 42 SOUTH, RANGE 40 EAST, PALM BEACH COUNTY, FLORIDA

THIS INSTRUMENT WAS PREPARED BY
TIMOTHY M. SMITH, PROFESSIONAL SURVEYOR AND MAPPER
FLORIDA CERTIFICATE NO. LS 004676
TIMOTHY M. SMITH LAND SURVEYING, INC.

4546 CAMBRIDGE STREET
WEST PALM BEACH, FL 33415
(561) 602-8160



POINT OF COMMENCEMENT
E QUARTER CORNER SEC 13/42/40
P.B.C. POSITION
NOT FOUND
N 903137.5380
E 886624.6990

POINT OF BEGINNING
N 902048.0887
E 886477.6089

LEGEND

SEC 13/42/40	SECTION 13, TOWNSHIP 44 SOUTH, RANGE 43 EAST
P.B.	PLAT BOOK
P.B.C.	PALM BEACH COUNTY
PG.	PAGE
O.R.B.	OFFICIAL RECORDS BOOK
R.D.E.	ROAD & DRAINAGE EASEMENT
U.E.	UTILITY EASEMENT
□	SET 4"x4" CONCRETE MONUMENT STAMPED "PRM LB6865" SET
●	SET NAIL WITH DISK STAMPED LB 6865 PRM

- NOTES, COORDINATES, BEARINGS AND DISTANCES**
- COORDINATES SHOWN ARE GRID
 - DATUM = NAD 83 (90 ADJUSTMENT)
 - ZONE = FLORIDA EAST
 - LINEAR UNIT = US SURVEY FEET
 - COORDINATE SYSTEM 1983 STATE PLANE
 - TRANSVERSE MERCATOR PROJECTION
 - ALL DISTANCES ARE GROUND UNLESS OTHERWISE NOTED
 - SCALE FACTOR = 1.00000204
 - GROUND DISTANCE X SCALE FACTOR = GRID DISTANCE
 - BEARINGS AS SHOWN HEREON ARE GRID DATUM, NAD 83 (90 ADJUSTMENT), FLORIDA EAST ZONE.